

EM Support Project Team for Tsunami Reconstruction

Operations Report 1
July 4, 2011
EM Research Organization, Inc.

On behalf of the EM Support Project Team for Tsunami Reconstruction, we would like to express our sincere thanks and appreciation for the invaluable donations we received for supporting affected areas in Japan by the earthquake and tsunami.

EM Support Project Team for Tsunami Reconstruction formed by EM Seikatsu, Inc., United Networks for Earth Environment (U-net of Japan) and EM Research Organization aiming to support volunteer activities in the damaged areas, providing EM materials, technical support and seeking for ways to contribute with the Japanese government and local administrations.

This is the first operations report updated on July 4, 2011.

Background

Great East Japan Earthquake and Tsunami struck Eastern area of mainland Japan on March 11 2011. The earthquake of a magnitude 9.0 generated a devastating tsunami whose consequences are still being studying. Both earthquake and tsunamis damaged a nuclear plant in Fukushima prefecture causing radiation leaks that resulted in an evacuation area of 20 kilometers radius around the plant.

At June 30, confirmed death toll surpassing 15,500. There are still 7,189 persons missing, more than 5,300 injured, 644,182 properties totally and partially damaged and approximately 3,559 roads damaged (data from National Police Agency of Japan http://www.npa.go.jp/archive/keibi/biki/index_e.htm). Up to the date the EM Support Project Team is mainly assisting EM volunteer groups working on site and providing technical support and materials to the areas in need.



View of Kamaishi and Ofunato, cities in Iwate Prefecture



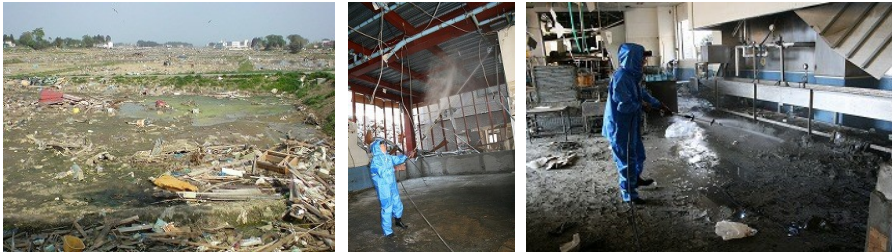
Relief Supplies Center in Tono City, Iwate Prefecture



Volunteer Groups

Mr. Ashikaga, Sanriku EM Association

Mr. Ashikaga of Sanriku EM Association is one of the affected victims in Kesennuma City, Miyagi prefecture, after the tsunami washed away his house and office. Despite suffering big loss, Mr. Ashikaga determined to launch a program to relief and reconstruct devastated areas in Kesennuma City applying EM Technology. He started in a shark's fin processing factory, schools and continuing in more other places. Sanriku EM Association is supported by EM Seikatsu (associated company of EM Research Organization that offers EM products and services using EM technology) which provides EM materials to get proper evolution on their activities. Mass of rubbles that still remained cannot be removed blocking massive numbers of rotten animal carcass that are emitting bad odors. The EM Support Project Team will be providing motor sprayers to improve work efficiency. These sprayers are covered by financial funds EM Support Project Team received by donations.



After the tsunami in Kesennuma city and Mr. Ashikaga spraying Activated EM • 1 ® in the fish processing factory

ALL HANDS

ALL HANDS (<http://hands.org/>) is a volunteer group based in the U.S. that provides assistance to regions affected by natural disasters. A team of ALL HANDS is stationed in Rikuzentakata city and Ofunato city, Iwate prefecture where around 7,200 homes were damaged by the earthquake and tsunami. They are working to recover houses and resettling 26,000 affected people. In doing this, they are using EM•1® provided by the EM Support Project Team to counter odors and sanitation conditions while cleaning houses and surroundings.



Volunteers spraying Activated EM•1® under floors, surroundings and on garbage from a seaweed factory

Mr. Hirano, SPC Japan

Mr. Hirano a member of SPC Japan (a beautician group which uses EM products) has owned a 5 tons tank lorry to spray EM • 1 ® and has set up several tanks to activate EM • 1 ® in large scale. He is providing Activate EM • 1 ® to affected areas in Miyagi Prefecture, and farmlands testing measures against seawater damage fields. EM Support Project Team will be providing assistance creating strategic bases to culture EM and sending technical staff according to their needs.



Mr. Hirano's 5 tons tank lorry

Spraying Activated EM•1® on the riverside and the EM tanks

Iwate Compost

This company dedicates to recycle sewage sludge, wooden waste from construction sites, industrial waste and others residues, smashing and treating them by a mixed fermentation process. They produce especial organic compost made from organic waste, rice husk, coffee beans residue called Cosmogreen and EM compost. Tsunami's aftermath includes massive fish death and the consequent rotting and stench problems. Iwate Compost brings the solution mixing pile of dead fish with EM compost and Cosmogreen. EM Support Project Team has provided EM • 1 ® and molasses to support their volunteer works.



View of discharging compost and spraying EM • 1 ® into the hole of organic waste

Workshop and Presentations

EM Research Organization's technical staff was dispatched to Ofunato City to provide technical support and conduct a workshop for the volunteer group ALL HANDS. They learned on how to use EM • 1 ® in time of disasters to counter sanitation and odor problems to be applied during their Tohoku Project operations.



View of the workshop with the volunteer group All Hands

Presentations of EM application for fields damaged by seawater were shown to Japan Agriculture Cooperatives in Hanamaki City, Iwate prefecture.

Meeting with authorities of the disaster countermeasures office of Kamaishi and Otsuchi cities in Iwate prefecture, held to give details on EM application for the reconstruction project. They were deeply concerned about treatment for the rotten fish at the port area.

Technical Support on Site

Thanks to EM farmers in Iwate Prefecture, neighboring residents asked for EM applications and answers to cope with salt-affected soils. EM Research Organization's technical officer was on site to lecture and provide technical advice to a carnation grower among other farmers. The EM farmer and willing collaborator Ms. Takahashi's barn has been set up to activate EM • 1 ® and provide it to neighbors and affected areas. EM Bio-reactor and 1 ton tank will be provided thank to donations received for the EM Support Project.



Carnation house damaged by the tsunami

EM Products and Materials

Up to the present date, the Project Team for Tsunami Reconstruction has supplied:

Activated EM • 1 ®: 74,464L
 EM Bokashi: 32,162kg
 Handmade EM Soap: 1,471



EM Soap made from waste oil, provided to evacuee centers

EM Research Organization has donated:

EM • 1 ®: 10,660 l
 EM • 3 ®: 500 l
 Molasses: 4,720 l



*First shipment container from EM Research Organization (left)
 EM products arrivals on site (right)*

Comments

Worth to honorable mention is that there are many other EM volunteer groups and individuals working on damaged areas who are the backbone of the EM Support Project.